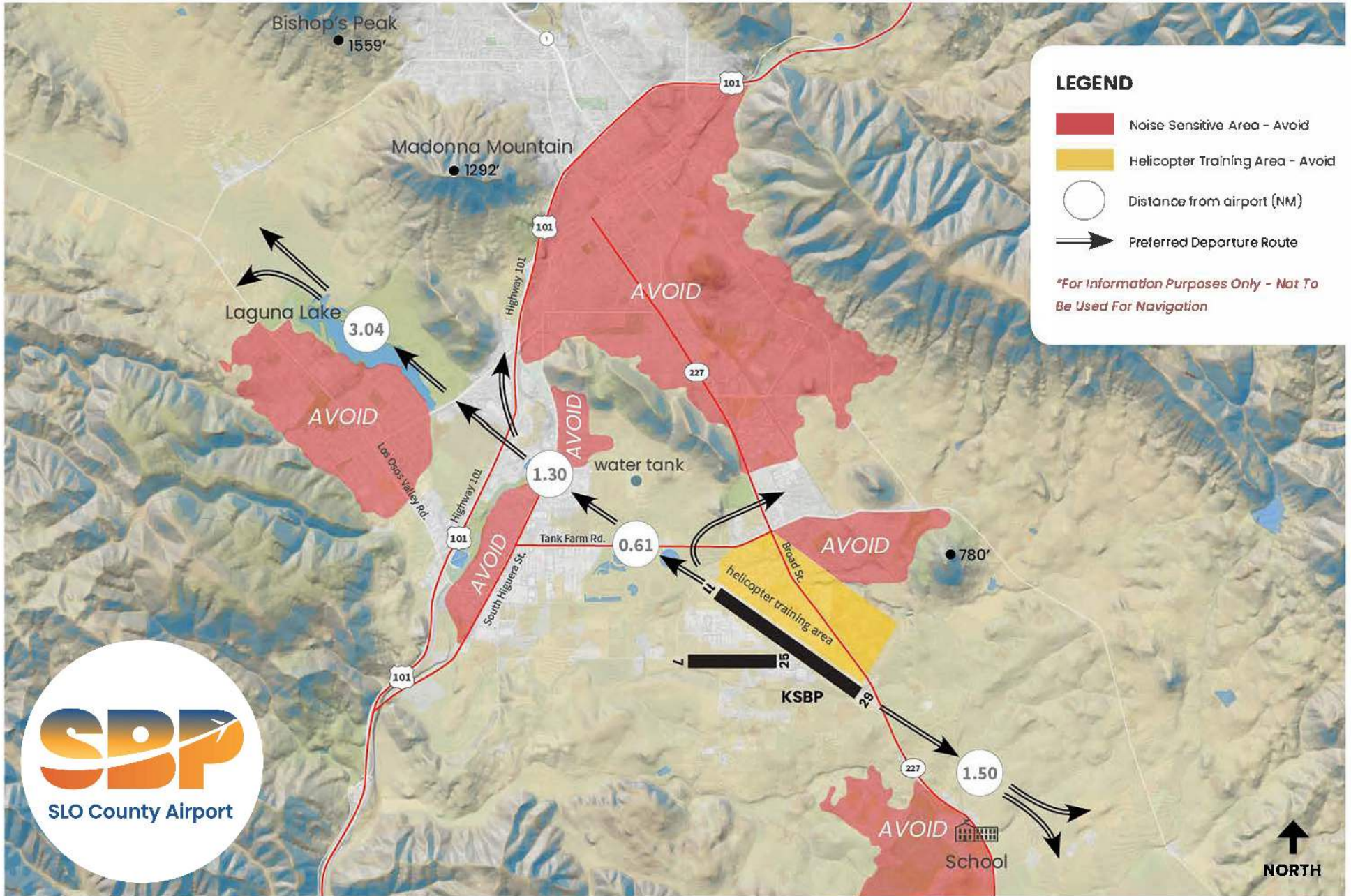


Quiet Flight Procedures SBP | SLO County Airport



Safety & ATC Instructions Always Override Noise Abatement Procedures

Quiet Flight Procedures

SLO County Airport

The San Luis Obispo County Regional Airport is surrounded by noise sensitive areas. Procedures outlined in this guide were prepared by local pilots in an effort to reduce the noise impact on our neighbors.

MORE INFORMATION

SLO County Airport

975 Airport Drive, Suite 1
San Luis Obispo, CA 93401

(805) 781-5205

staff@sloairport.com

Contact	Frequency	Phone
SBP Tower / CTAF	124.00	(805) 541-1161
SBP Ground	121.60	
ATIS	120.60	(805) 545-9638
ASOS		(805) 547-1260
Unicom Fuel (ACI Jet)	131.75	(805) 782-9722
Hawthorne AFSS	122.40	(800) 992-7433
LA Center	119.05	
SBA Approach	127.725	

sloairport.com

ARRIVALS

- Use VASI and remain at or above glide slope
- Maintain TPA on downwind
- Avoid power changes on base-final legs
- Avoid noise sensitive area overflights
- Avoid school overflight

DEPARTURES

Runway 29

Right Crosswind

Heading 290° to Highway 101, then turn right crosswind.

Right Downwind

No right turns prior to Tank Farm Road (0.61 NM) and turn right crosswind prior to water tank on right line.

Left Crosswind

Turn left prior to reaching South Higuera Street (1.30 NM) or fly RH 290° and delay left turn until past Laguna Lake (3.04 NM).

Left Downwind

Turn left crosswind prior to reaching South Higuera Street (1.30 NM).

Runway 11

Right Crosswind

Heading 110°, delay turn until past school and noise sensitive area.

Right Downwind

Heading 110°, climb to TPA before executing turn AVOID OVERFLIGHT of school and noise sensitive area.

Recommended TPA for Noise Abatement

Singe Engine Aircraft: 1712' (1500' AGL)

Multi-Engine, Jets, Large Aircraft: 2212' (2000' AGL)

TOUCH & GO'S

Runway 29

No turns prior to end of runway and turn crosswind over Tank Farm Road.

Maintain TPA on downwind.

Runway 11

Maintain runway heading and reach TPA prior to right crosswind.

Minimize power/RPM settings and avoid power changes on base-to-final.

Do not overfly school.

When ATC is available, vary right/left traffic 11-29 or use 7-25 (winds permitting) to avoid repetitive overflights.

JET AIRCRAFT OPERATORS

Use NBAA or aircraft manufacturer recommended quiet flying techniques.

Minimum reverse thrust between 2200 and 0700 local time, consistent with safety.

Prolonged use of APU should be considered between 2200 and 0700 local time.

Stage 1 aircraft should not depart from the airport between 2200 and 0700 local.

HELICOPTERS

Avoid noise sensitive area overflight

Local training operations shall be conducted in designated areas only.

